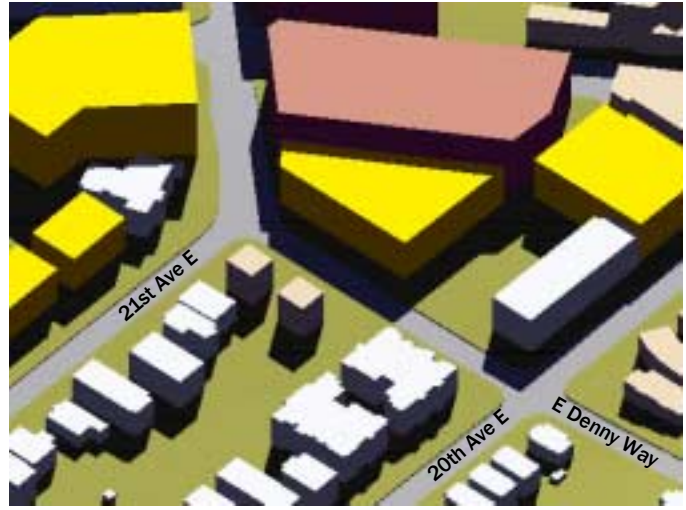


Comparison between potential 40-foot building and 65-foot building in Area 4a

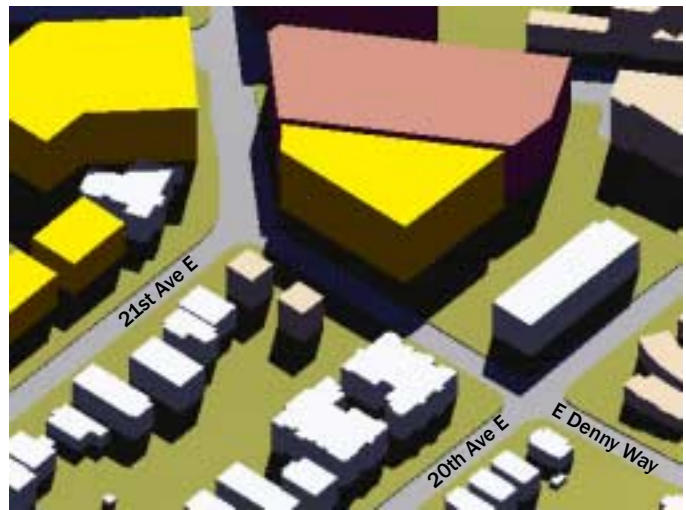
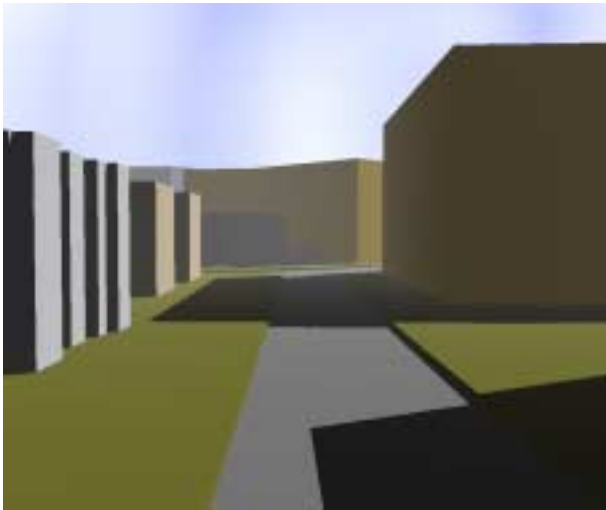
Perspective facing South on E. Denny Way

Shadow effect at Vernal Equinox, March 21 10:30 am.

40'



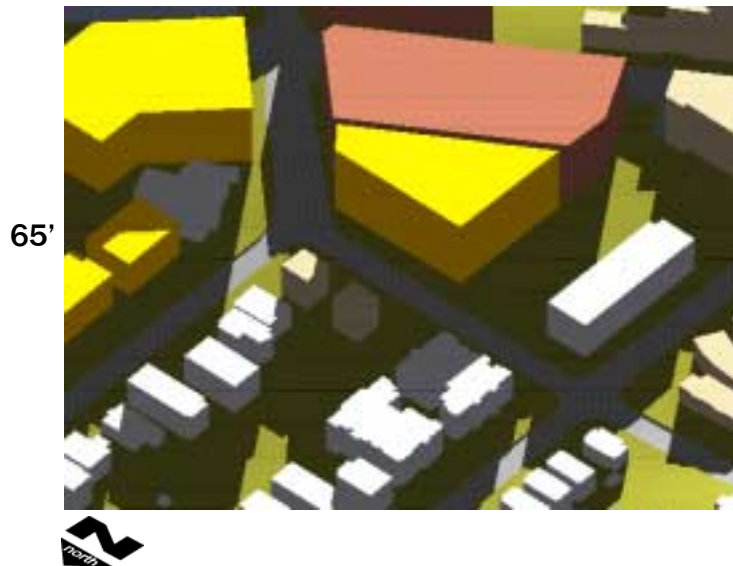
65'



**Shadow effect at Winter Solstice,
December 21 10:30 am.**



A 40-foot building built lot line-to-lot line on the parcels on the southwest corner of 21st Ave E & E Denny Way would cast a shadow onto parcels to the north during daylight hours (between 10:30 a.m. and 2:30 p.m.), but would not completely envelope the adjacent buildings.



At a maximum a 65-foot building built lot line-to-lot line on the parcels on the southwest corner of 21st Ave E & E Denny Way would cast a shadow completely over structures up to three parcels to the north during daylight hours (between 10:30 a.m. and 2:30 p.m.). This effect could potentially be mitigated through the City of Seattle's Design Review Process.

Comparison between potential 40-foot building and 65-foot building in Area 4a, continued

Shadow effect at Winter Solstice, December 21 12 noon.



Effect on potential L4 redevelopment to the north



Shadow effect at Winter Solstice,
December 21 2:30 pm.



Effect on potential L4 redevelopment to
the north

